

## Trolley

Substantially stronger mounting solution  
placing image processor or display



### High Portability

Convenient for transportation and  
storage, providing higher maneuverability.



### High Compatibility

Compatible with HugeMed products in  
Airway Management, Pulmonology,  
Urology, etc.



## Wide Application for Single-Use Endoscopes



Suitable for urology, ENT, pulmonology, gastroenterology, etc.



### Medical Waste Container

Detachable medical waste bin for safe disposal and infection control.

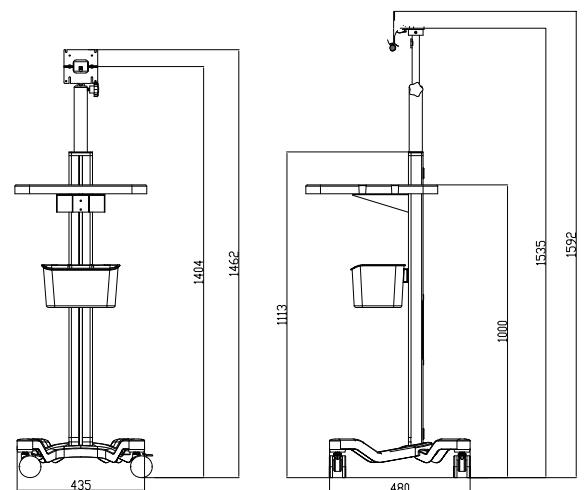


### Height-Adjustable Mount

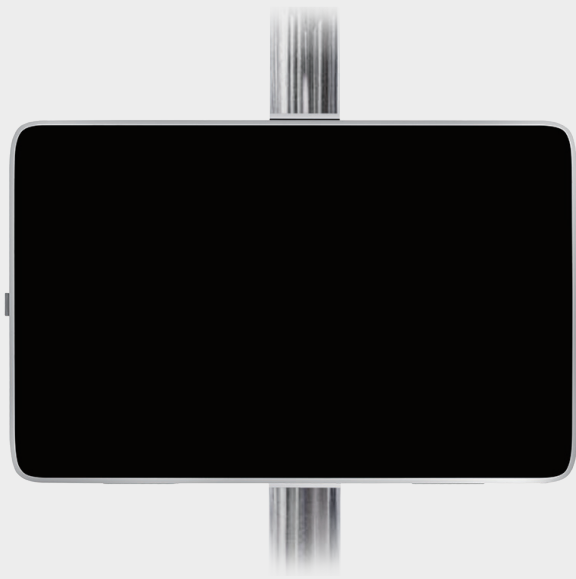
Stainless steel mobile stand with quick-release locking mechanism for vertical positioning of medical devices.

## Physical Structure Dimensions

RP-GT03



Specifications, design and accessories are subject to change without any notice or obligation on the part of the manufacturer.



## Pole mount

### Pole mount clamp for processor/display

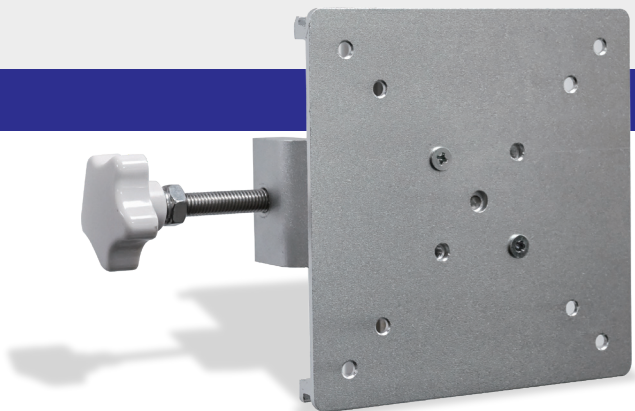
Reinforced mounting solution for stable  
equipment positioning



## Pole Mounting Solution

### Product Description

This pole mount allows the image processor to be mounted on the roll stands, ambulance cots or hospital stretchers.



### Product detail

Size: 126\*126\*57mm  
Maximum load capacity: 3 kg  
Direct mounting to 75×75mm or 100×100mm  
patterns, includes adjustable clamp for  
posts/rails (Ø10–40 mm).





## Pole Mounting Solution

# Power Supply Mount

**Pole mount clamp  
for power adapter/cable with cable cleat**

Compact solution for easy pole-mounted device installation



## Product detail

Size: 215\*114\*86mm

Maximum load capacity: 3 kg

Adjustable clamp for posts/rails (Ø10-40 mm)

**Secures the placement of the power adapter  
and its cables, allows them to be attached  
to the pole and keep it off the ground**



Specifications, design and accessories are subject to change without any notice or obligation on the part of the manufacturer.