

Bronchoscope System

Comprehensive Selection, Aligned with Clinical Challenges

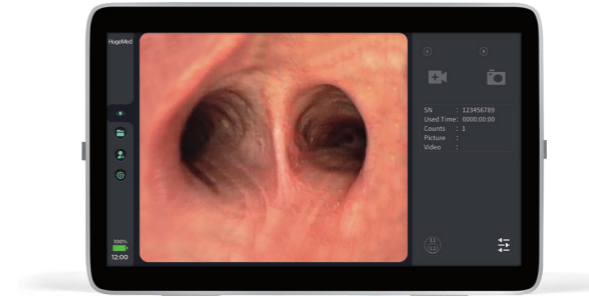
The single-use bronchoscope provides an extensive selection of models and excellent maneuverability, enhancing possibilities in clinically accurate diagnosis and therapy.



FDA 510(K) Cleared
K222910

Image Processor

Image processing, display and recording



Specification	
Model	M5-8
Dimension	386.4 (h) x 253.6 (w) x 38.5 (d) mm
Weight	2.7 kg
Display size	15.6 inches
Display resolution	1080P(1920*1080)px
Display type	TFT-LCD, touch screen
Function	Dual view, Brightness control, Contrast control, Using time calculator, etc.
Working time	Continuous working time ≤5 h
Memory capacity	Built-in SD card standard 64 GB

Single-use Bronchoscope

Good maneuverability

Specification					
Model	BR-M22	BR-M30	BR-M42	BR-M50	BR-M58
Outer diameter	2.2 mm	3.0 mm	4.2 mm	5.0 mm	5.8 mm
Working channel	0.0 mm	1.2 mm	2.2 mm	2.8 mm	3.6 mm
Up/down bending angle	210/210°	210/210°	210/210°	210/210°	210/210°
Left/right rotation	120/120°	120/120°	120/120°	120/120°	120/120°
Working length	600 mm	600 mm	600 mm	600 mm	600 mm

Order Information

Product	Item Code
Single-use Bronchoscope	
BR-M22	2016B-PA037
BR-M30	2016B-BRM30-PA001
BR-M42	2016B-BRM42-PA001
BR-M50	2016B-PA033
BR-M58	2016B-PA031
Image Processor	
M5-8	2288B-PA003

Specifications, design and accessories are subject to change without any notice or obligation on the part of the manufacturer.

Next-level single-use bronchoscope

Promoting Maneuverability

Better in Performance

Gold-finger connector

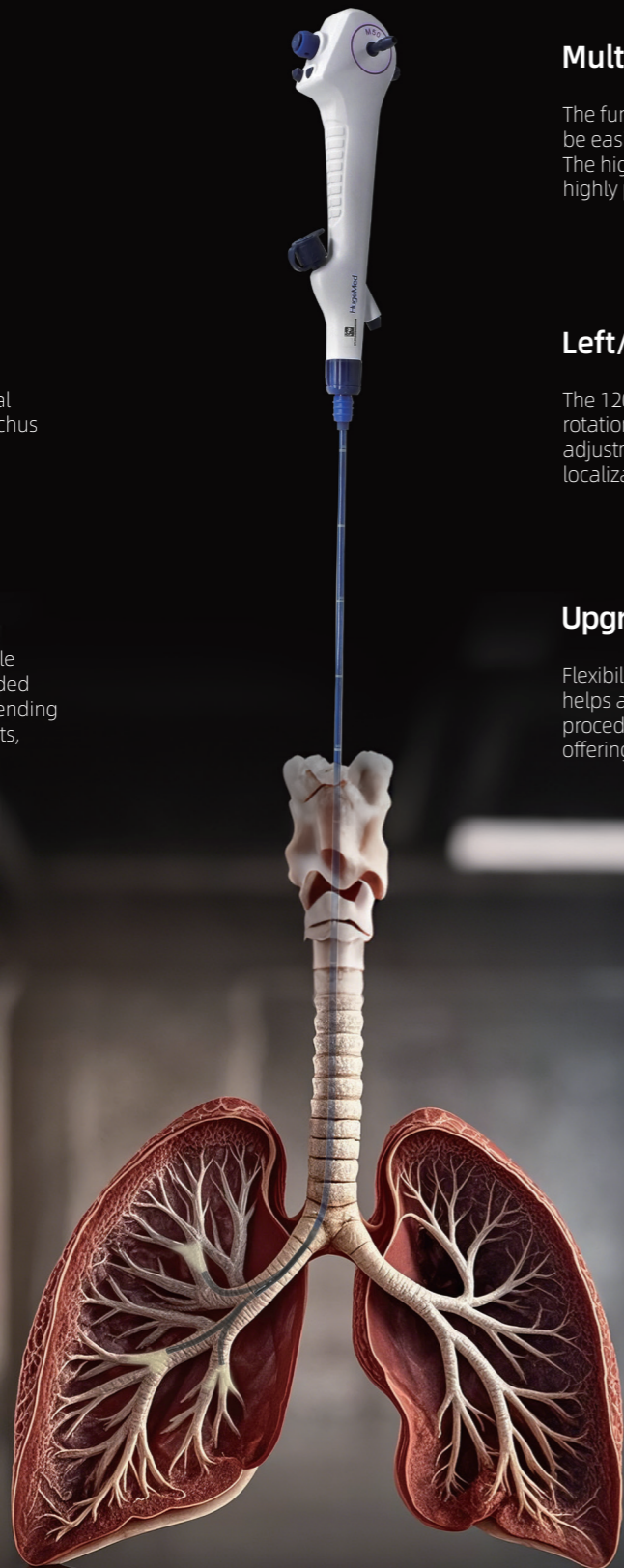
Gold-finger connector features excellent corrosion resistance, conductivity and effective electromagnetic shielding, ensuring high-speed and stable signal transmission.

Passive bending

Induced curvature caused by external force helps to fit the contour of bronchus and move through acute bends and access hard-to-reach areas in the bronchial trees, facilitating deep and smooth insertion.

210° bending angle

The 210° up and down bending angle offers excellent flexibility and expanded vision, providing a larger range of bending after inserting endoscopy instruments, facilitating precious diagnosis and bronchoscopy therapy.



Multi-function buttons

The functions of 2 buttons can be easily customized by MS-8. The high compatibility offers a highly personalized experience.

Left/right rotation

The 120° left and right insertion tube rotation facilitates distal tip direction adjustment, promoting precise localization and maneuverability.

Upgraded soft insertion tube

Flexibility improved by soft insertion tube helps achieve precise targeting during procedure and reduce airway damage, offering excellent precision and safety.

More sizes

More possibilities

HugeMed™ single-use bronchoscope has 6 models, providing more choices and potential for complex clinical situations. Ultra-slim outer diameters facilitate peripheral lung checking and therapy. Large working channels offer satisfied suction power and wider space for endoscopy instruments.



BR-M22
2.2/0mm

BR-M30
3.0/1.2mm

BR-M42
4.2/2.2mm

BR-M50
5.0/2.8mm

BR-M58
5.8/3.6mm

SLIM MODELS

- A petite person's intubation or airway DLT location
- Peripheral lung checking and therapy

ROUTINE MODELS

- The features of adapting to most ETT facilitate routine intubation
- Bedside bronchoscopy therapy

THERAPY MODELS

- Large working channels of over 2.8mm provide powerful suction and wider space for endoscopy instruments.

MS-8 can serve as an all-in-one work platform for high-quality imaging, document recording and case management, providing a smooth workflow. It is highly compatible with HugeMed™ single-use bronchoscope.



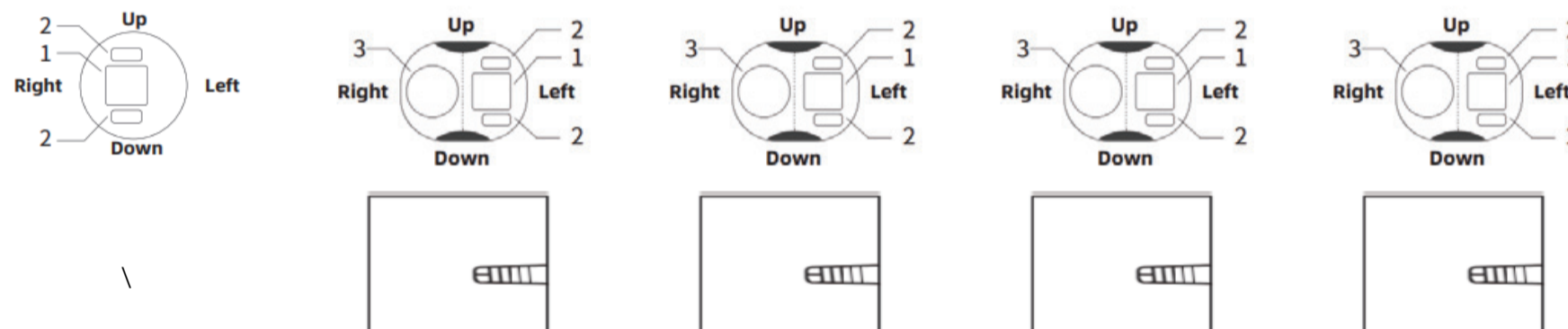
Bronchoscope System

Specification / Datasheet

Safety

Standard Class II, 21CFR 874.4680 / Bronchoscope (Flexible or Rigid) / EOQ

Single-Use Bronchoscope

Model	BR-M22	BR-M30	BR-M42	BR-M50	BR-M58
Type	Flexible				
Image Sensor	CMOS (Complementary Metal Oxide Semiconductor) Chip-on-Tip				
Field of View	120°±10%	120°±10%	120°±10%	120°±10%	120°±10%
Direction of View	0°±10°	0°±10°	0°±10°	0°±10°	0°±10°
Depth of Field	3-100 mm	3-100 mm	3-100 mm	3-100 mm	3-100 mm
Insertion Tube Outer Diameter	2.2 mm	3.0 mm	4.2 mm	5.0 mm	5.8 mm
Maximum Size of Insertion Portion	2.3 mm	3.0 mm	4.2 mm	5.1 mm	6.1 mm
Working Channel Inner Diameter	\	1.2 mm	2.2 mm	2.8 mm	3.6 mm
Bending Angle (Up/Down)	210° /210°	210° /210°	210° /210°	210° /210°	210° /210°
Working Length	600 mm±10%	600 mm±10%	600 mm±10%	600 mm±10%	600 mm±10%
Total Length	860 mm±10%	860 mm±10%	860 mm±10%	860 mm±10%	860 mm±10%
Weight	≤ 0.28 kg	≤ 0.28 kg	≤ 0.28 kg	≤ 0.28 kg	≤ 0.28 kg
Control Button	Button 1/2 (White Balance, Snapshot, Video Recording, Freeze, Zoom in/out, None)				
Recommended minimum ETT inner diameter*1	≥2.5 mm	≥3.5 mm	≥4.5 mm	≥5.5 mm	≥6.5 mm
Minimum DLT size recommended for use*1	≥26Fr	≥32Fr	≥35Fr	≥41Fr	/
Recommended maximum instrument size*2	/	<1.2 mm	<2.2 mm	<2.8 mm	<3.6 mm
Enlarged View of the Distal End					
1. CMOS Sensor					
2. LED Light Source					
3. Instrument Channel Outlet					
Instrument Channel	(direction from which instruments enter and exit the image)				

*1 The inner diameter of ETT and DLT can vary depending on the specific brand or model of the tube. There is no guarantee that all the tubes selected can be passed by.

*2 Due to the vary instruments in the market, there is also no guarantee that all the recommended sizes of instrument can go pass the working channel.

Image Processor

Model	MS-8
Operating	Temperature: 5°C-40 °C, atmospheric pressure: 700hPa-1060hPa, humidity: ≤93%.
Storage	Temperature: 0°C-45 °C, atmospheric pressure: 700hPa-1060hPa, humidity: 30%-95%.
Transportation	Temperature: 0°C-45 °C, atmospheric pressure: 700hPa-1060hPa, humidity: 30%-95%.

Physical Specification

Dimensions	386.4 (h) x 253.6 (w) x 38.5 (d) mm
Weight	2.7 kg
Display	
Display Size	15.6 inches
Aspect Ratio	16:9
Display Resolution	1920*1080 px FHD
Display Type	Color TFT-LCD with touch screen
Dual Scope Display	Automatically activated when two scopes are simultaneously connected to MS-8. Scope A (USB-C port) Scope B (Edge Connector port)
Display Rotation	Supported
Function of Settings	
Scope Button Configuration	Button A/B: White Balance, Zoom In/Out, Snapshot, Video Recording, Freeze, Disabled
Image Adjustment	LED Level / Sharpness / Color Tone / Contrast
Language	Simplified Chinese, English, French, German, Spanish, Portuguese, Norwegian, Swedish, Finnish, Italian, Russian, Traditional Chinese, Japanese, Persian, Romanian, Korean, etc.
Pre-Recording	Patient Information Management - Enabled/Disabled
Image Border	



Bronchoscope System



Specification / Datasheet

Laser Filter	Insufficient laser fiber protrusion warning - Enabled/Disabled Image quality improvement by reducing laser interference- Enabled/Disabled
Connectivity	
USB I (USB-A)	Data transfer & system upgrades Keyboard & Mouse Printer Barcode scanner
VL Port (USB-C)	For connection with endoscopes supporting USB-C cables
Endoscope Port (Edge Connector)	For connection with endoscopes supporting edge connector cables
DC	Power supply
USB II (USB-A)	For developers only
HDMI	High-definition multimedia interface (HDMI) port, for connection with external monitors
SDI	Serial digital interface (SDI) port, for connection with external monitors
DVI	Digital visual interface (DVI) port, for connection with external monitors
Output Resolution	1920*1080 px FHD (Max)
Recording Function	
Recording Format	JPG/Bmp for snapshots; MP4 for videos(Low/Medium/High)
Memory Capacity	Built-in SD card, standard 64 GB
Audio Recording	Supported
File & Folder Renaming	Supported
Case Templates	Supported
Power Supply	
Power Adapter Input	AC 100-240V 50/60Hz, 1.5A Max (Battery charger)
Battery	Rechargeable lithium battery, DC 7.4V, 9500 mAh
Continuous Working Time*	Maximum 5 hours *The battery needs to be replaced if the working time is less than 30 minutes.
Mounting Interface	
Mounting Interface Standard	VESA MIS-D 100/75, C compliant displays with mounting interface
Cleaning and Disinfection	Note: Do not pour any liquid into MS-8 or immerse it in any liquid.
Recommended Cleaning Method	It is recommended to wipe MS-8 with water mixed with detergents or enzyme solutions for cleaning.
Recommended Disinfection Method	It is recommended to wipe MS-8 with 75% medical alcohol for disinfection.

Product specifications, design, and accessories are subject to change without prior notice or obligation from the manufacturer.

FDA 510(K) Cleared K222910

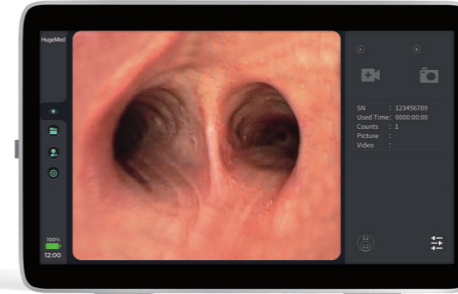
Bronchoscope System

High-definition imaging, Extraordinary experience

The single-use bronchoscope, featuring a high-definition CMOS sensor, provides advanced imaging and excellent maneuverability, making it suitable for a wide range of clinical scenarios, from intubation and visualized diagnosis to routine therapeutic bronchoscopy in the ICU.

Image Processor

Image processing, display and recording



Specification	
Model	M5-8
Dimension	386.4 (h) x 253.6 (w) x 38.5 (d) mm
Weight	2.7 kg
Display size	15.6 inches
Display resolution	1080P(1920*1080)px
Display type	TFT-LCD, touch screen
Function	Dual view, Brightness control, Contrast control, Using time calculator, etc.
Working time	Continuous working time ≤5 h
Memory capacity	Built-in SD card standard 64 GB

Single-use Bronchoscope

Good maneuverability

Specification			
Model	BR-M40H	BR-M52H	BR-M58H
Outer diameter	4.0 mm	5.0 mm	6.0 mm
Working channel	1.2 mm	2.3 mm	2.8 mm
Up/down bending angle	210/210°	210/210°	210/210°
Working length	600 mm	600 mm	600 mm

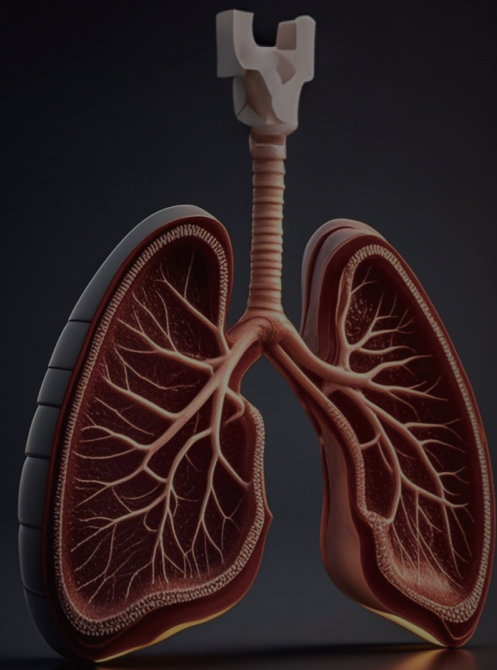
Order Information

Product	Item Code
Single-use Bronchoscope	
BR-M40H	2016B-PA030
BR-M52H	2016B-PA029
BR-M58H	2016B-PA028
Image Processor	
M5-8	2288B-PA003

Specifications, design and accessories are subject to change without any notice or obligation on the part of the manufacturer.



FDA 510(K) Cleared
K222910



HugeMed™ provides 3 models with Full HD output, offering exceptional imaging clarity. It is always available whenever you need, promoting the turnover rate of bronchoscopes in ICU, providing a high-efficiency solution for clinical application.



BR-M40H
4.0mm / 1.2mm



BR-M52H
5.0mm / 2.3mm



BR-M58H
6.0mm / 2.8mm

Brand New Experience of

Single-use Bronchoscope



Tube Adaptor

Designed to secure endotracheal tubes, preventing unintended movement or detachment throughout the procedure and enhancing intubation efficiency and safety.



Multi-function Buttons

The functions of 2 buttons can be easily customized by MS-8. The high compatibility offers a highly personalized experience.



210° Bending Angle

The 210° up and down bending angle offers superior flexibility and expanded vision, delivering great operability and extended viewing range.

MS-8

can serve as an all-in-one work platform for high-quality imaging and case management, providing a smooth workflow. It is highly compatible with HugeMed™ single-use bronchoscope.



Gold-finger Connector

Gold-finger connector features excellent corrosion resistance, conductivity and effective electromagnetic shielding, ensuring high-speed and stable signal transmission.



Full HD Output

The high-definition CMOS sensor delivers Full HD output and is paired with bright LED illumination, providing clear images and facilitating thorough observation in the ICU.



Passive Bending

Induced curvature caused by external force helps to move through acute bends and access hard-to-reach areas in the bronchial trees, facilitating deep and smooth insertion.



Bronchoscope System

Specification / Datasheet

Safety

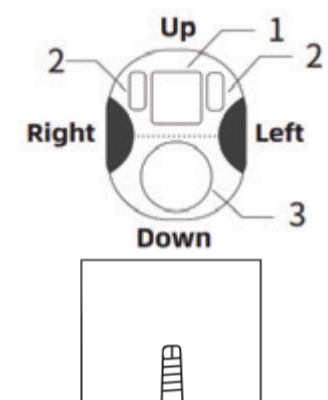
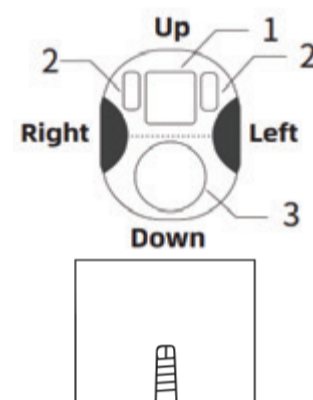
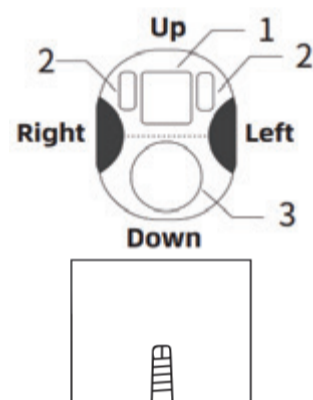
Standard Class II, 21CFR 874.4680 / Bronchoscope (Flexible or Rigid) / EOQ

Single-Use Bronchoscope

Model	BR-M40H	BR-M52H	BR-M58H
Type	Flexible		
Image Sensor	CMOS (Complementary Metal Oxide Semiconductor) Chip-on-Tip		
Field of View	120°±10%	120°±10%	120°±10%
Direction of View	0°±10°	0°±10°	0°±10°
Depth of Field	3-100 mm	3-100 mm	3-100 mm
Insertion Tube Outer Diameter	4.0 mm	5.0 mm	6.0 mm
Maximum Size of Insertion Portion	4.5 mm	5.5 mm	6.2 mm
Working Channel Inner Diameter	1.2 mm	2.3 mm	2.8 mm
Bending Angle (Up/Down)	210° up/210° down	210° up/210° down	210° up/210° down
Working Length	600mm±10%	600mm±10%	600mm±10%
Total Length	860mm±10%	860mm±10%	860mm±10%
Weight	≤ 0.28 kg	≤ 0.28 kg	≤ 0.28 kg
Control Button	Button 1/2 (White Balance, Snapshot, Video Recording, Freeze, Zoom in/out, None)		
Recommended minimum ETT inner diameter*1	5.0mm	6.0mm	7.0mm
Minimum DLT size recommended for use*1	37Fr	41Fr	/
Recommended maximum instrument size*2	<1.2mm	<2.3mm	<2.8mm

Enlarged View of the Distal End

1. CMOS Sensor
2. LED Light Source
3. Instrument Channel Outlet



Instrument Channel

(direction from which instruments enter and exit the image)

*1 The inner diameter of ETT and DLT can vary depending on the specific brand or model of the tube. There is no guarantee that all the tubes selected can be passed by.

*2 Due to the vary instruments in the market, there is also no guarantee that all the recommended sizes of instrument can go pass the working channel.

Image Processor

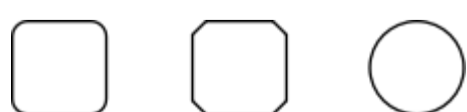
Model	MS-8
Operating	Temperature: 5°C-40 °C, atmospheric pressure: 700hPa-1060hPa, humidity: ≤93%.
Storage	Temperature: 0°C-45 °C, atmospheric pressure: 700hPa-1060hPa, humidity: 30%-95%.
Transportation	Temperature: 0°C-45 °C, atmospheric pressure: 700hPa-1060hPa, humidity: 30%-95%.

Physical Specification

Dimensions	386.4 (h) x 253.6 (w) x 38.5 (d) mm
Weight	2.7 kg
Display	
Display Size	15.6 inches
Aspect Ratio	16:9
Display Resolution	1920*1080 px FHD
Display Type	Color TFT-LCD with touch screen
Dual Scope Display	Automatically activated when two scopes are simultaneously connected to MS-8. Scope A (USB-C port) Scope B (Edge Connector port)
Display Rotation	Supported

Function of Settings

Scope Button Configuration	Button A/B: White Balance, Zoom In/Out, Snapshot, Video Recording, Freeze, Disabled
Image Adjustment	LED Level / Sharpness / Color Tone / Contrast
Language	Simplified Chinese, English, French, German, Spanish, Portuguese, Norwegian, Swedish, Finnish, Italian, Russian, Traditional Chinese, Japanese, Persian, Romanian, Korean, etc.
Pre-Recording	Patient Information Management - Enabled/Disabled
Image Border	



Bronchoscope System



Specification / Datasheet

Laser Filter	Insufficient laser fiber protrusion warning - Enabled/Disabled Image quality improvement by reducing laser interference- Enabled/Disabled
Connectivity	
USB I (USB-A)	Data transfer & system upgrades Keyboard & Mouse Printer Barcode scanner
VL Port (USB-C)	For connection with endoscopes supporting USB-C cables
Endoscope Port (Edge Connector)	For connection with endoscopes supporting edge connector cables
DC	Power supply
USB II (USB-A)	For developers only
HDMI	High-definition multimedia interface (HDMI) port, for connection with external monitors
SDI	Serial digital interface (SDI) port, for connection with external monitors
DVI	Digital visual interface (DVI) port, for connection with external monitors
Output Resolution	1920*1080 px FHD (Max)
Recording Function	
Recording Format	JPG/Bmp for snapshots; MP4 for videos(Low/Medium/High)
Memory Capacity	Built-in SD card, standard 64 GB
Audio Recording	Supported
File & Folder Renaming	Supported
Case Templates	Supported
Power Supply	
Power Adapter Input	AC 100-240V 50/60Hz, 1.5A Max (Battery charger)
Battery	Rechargeable lithium battery, DC 7.4V, 9500 mAh
Continuous Working Time*	Maximum 5 hours *The battery needs to be replaced if the working time is less than 30 minutes.
Mounting Interface	
Mounting Interface Standard	VESA MIS-D 100/75, C compliant displays with mounting interface
Cleaning and Disinfection	Note: Do not pour any liquid into MS-8 or immerse it in any liquid.
Recommended Cleaning Method	It is recommended to wipe MS-8 with water mixed with detergents or enzyme solutions for cleaning.
Recommended Disinfection Method	It is recommended to wipe MS-8 with 75% medical alcohol for disinfection.

Product specifications, design, and accessories are subject to change without prior notice or obligation from the manufacturer.

FDA 510(K) Cleared K222910