



# RhinoLaryngoscope System

—  
For your easier  
Rhinolaryngoscopy in OPD



Single-use



No Cross-infection



Portable



Always Ready To Go

**FDA 510(K) Cleared**  
**K232435**

# Single-use Rhinolaryngoscope

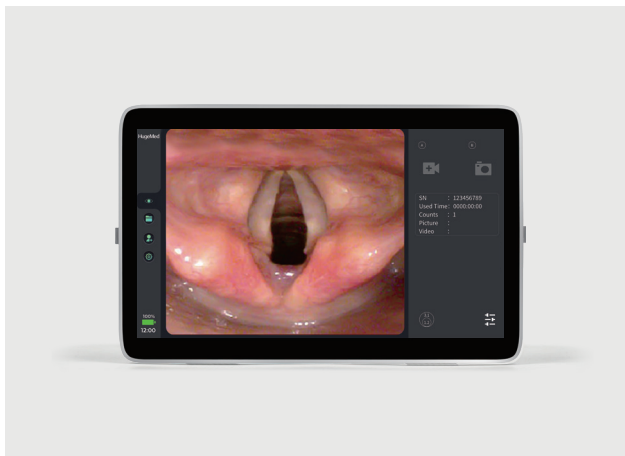
Can be used for nasolaryngoscopy, laryngoscopy, pharyngoscopy and swallowing examination.

Model	O.D.	I.D.	Deflection	Field of View	Working Length	Direction of View
RH-M22	2.2mm	/	210° Up/ Down	120°	350mm	0°
RH-M32	3.1mm	1.2mm	210° Up/ Down	120°	350mm	0°
RH-M32A	3.1mm	/	210° Up/ Down	120°	350mm	0°
RH-M40H	4.0mm	1.2mm	210° Up/ Down	120°	350mm	0°
RH-M40	4.0mm	2.0mm	210° Up/ Down	120°	350mm	0°



## Image Processor

Image processing, display and recording  
All-in-one



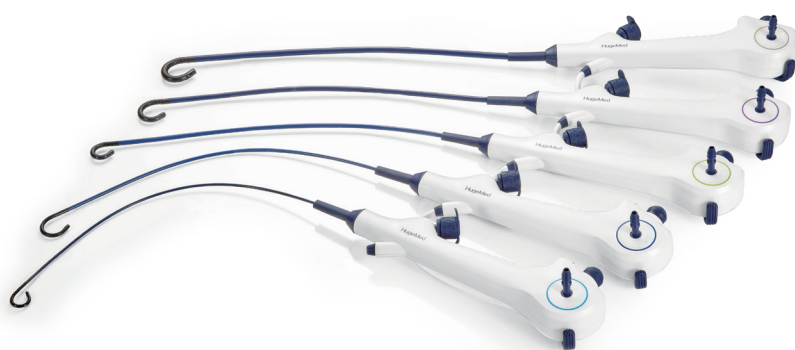
### Specification

Model	MS-8
Dimension	386.4 (h) x 253.6 (w) x 38.5 (d) mm
Weight	2.7 kg
Display size	15.6 inches
Display resolution	1080P(1920*1080)px
Display type	TFT-LCD, touch screen
Function	Dual view, LED Level/Sharpness/Color Tone/Contrast, Rotation, White balance
Working time	Continuous working time ≤5 h
Memory capacity	Built-in SD card standard 64 GB

## Ordering information

Product	Item code
<b>Single-use RhinoLaryngoscope</b>	
RH-M22	2018B-PA018
RH-M32	2018B-PA017
RH-M32A	2018B-PA028
RH-M40H	2018B-PA012
RH-M40	2018B-PA016
<b>Image processor</b>	
MS-8	2288B-PA003

Specifications, design and accessories are subject to change without any notice or obligation on the part of the manufacturer.



**Rhinolaryngoscope  
System**

# Datasheet

# RH Rhinolaryngoscope System Specification Datasheet

Safety	Standard	Class II, 21 CFR 874.4760 / Nasopharyngoscope (Flexible Or Rigid) And Accessories / EOB;				
	Operating Storage and transportation	Temperature: 5°C-40 °C, atmospheric pressure: 700hPa-1060hPa, humidity: ≤93%. Temperature: 0°C-45 °C, atmospheric pressure: 700hPa-1060hPa, humidity: 30%-95%.				
Single-use Rhinolaryngoscope	Model	RH-M22	RH-M32A	RH-M32	RH-M40	RH-M40H
	Item No.	2018B-PA018	2018B-PA028	2018B-PA017	2018B-PA016	2018B-PA012
	Type	Flexible	Flexible	Flexible	Flexible	Flexible
	Image sensor	CMOS (Complementary Metal Oxide Semiconductor) Chip-on-tip				
	View angle	120°±10%	120°±10%	120°±10%	120°±10%	120°±10%
	Direction of view	0°±10°	0°±10°	0°±10°	0°±10°	0°±10°
	View depth	3-50 mm	3-50 mm	3-50 mm	3-50 mm	3-50 mm
	Insertion tube diameter	2.2 mm	3.1 mm	3.1 mm	4.0 mm	4.0 mm
	Maximum size of insertion portion	2.3 mm	3.2 mm	3.2 mm	4.1 mm	4.5 mm
	Working channel	/	/	1.2 mm	2.0 mm	1.2 mm
	Bending angle(up/down)	210°/210°	210°/210°	210°/210°	210°/210°	210°/210°
	Working length	350 mm±10%	350 mm±10%	350 mm±10%	350 mm±10%	350 mm±10%
	Total length	605 mm±10%	605 mm±10%	605 mm±10%	605 mm±10%	605 mm±10%
	Weight	≤0.28 Kg	≤0.28 Kg	≤0.28 Kg	≤0.28 Kg	≤0.28 Kg
	Control button	Two Buttons (User definable, image processor allow the functions adjustment including White Balance, Zoom, Taking photo, Video recording, Freezing, Disable)				
	Enlarged view of tip 1. CMOS sensor 2. LED light source 3. Instrument channel outlet					
	Instrument channel (Direction from which instruments enter and exit the image)	/	/			
Image Processor	Model	MS-8				
	Operating	Temperature: 5°C-40 °C, atmospheric pressure: 800hPa-1060hPa, humidity: 30%-80%.				
	Storage	Temperature: -10°C-45 °C, atmospheric pressure: 800hPa-1060hPa, humidity: 30%-80%.				
	Transportation	Temperature: -20°C-50 °C, atmospheric pressure: 800hPa-1060hPa, humidity: 20%-90%.				
	Physical specification					
	Dimensions	386.4 (h) x 253.6 (w) x 38.5 (d) mm				
	Weight	2.7 kg				
	Display					
	Display size	15.6 inches				
	Display resolution	1920*1080 px				
	Display type	Color TFT LCD with touch screen				
	Display orientation	Support dual-view display, rotation function				
	Function of setting					
	Scope button configuration	Function of A/B: White Balance, Zoom, Taking photo, Video recording, Freezing, Disable				
	Image adjustment	LED Level/Sharpness/Color Tone/Contrast				
	Language	English, French, German, Spanish, Portuguese, Swedish, Finnish, Norsk, Italian, Russian and Chinese				
	Pre-recording	Control function of Patient Information Management on/off				
	Image border					
	Output interface					
	USB I	Connect to the USB flash drive for data transfer or updating system				
	Digital video output	HDMI, DVI and SDI for connectivity to the external monitor				
	Output resolution	Full HD 1920*1080 px				
	Input interface					
	VL-port	For connection with endoscope which configured with the USB Type-C cable				
	Endoscope Port	For connection with endoscope with the edge connector				
	DC	Power supply				
	USB II	Only for developers debugging the software				
	Recording function					
	Recording format	JPG for photograph or MP4 for video				
	Memory capacity	64 GB including operating system				
	Audio recording	No				
	Power supply					
	Power adapter input	AC 100-240V 50/60Hz, 1.5A Max(Battery charger)				
	Battery	Lithium battery rechargeable, DC 7.4V, 9500 mAh				
	Battery continuous working time*	Maximum 5 hours when battery under good condition and normal usage				
	Mounting interface					
	Mounting interface standard	VESA MIS-D 100/75, C compliant displays with mounting interface				
	Cleaning and disinfection					
	Recommended cleaning method	It is recommended that wiped by water mixed with detergents or enzymatic solution for cleaning.				
	Recommended disinfection method	It is recommended that wiped by 75% medical alcohol.				

\*The battery needs to be replaced if working time is less than 30 mins.

## Trolley

Substantially stronger mounting solution  
placing image processor or display



### High Portability

Convenient for transportation and  
storage, providing higher maneuverability.



### High Compatibility

Compatible with HugeMed products in  
Airway Management, Pulmonology,  
Urology, etc.



## Wide Application for Single-Use Endoscopes



Suitable for urology, ENT, pulmonology, gastroenterology, etc.



### Medical Waste Container

Detachable medical waste bin for safe disposal and infection control.

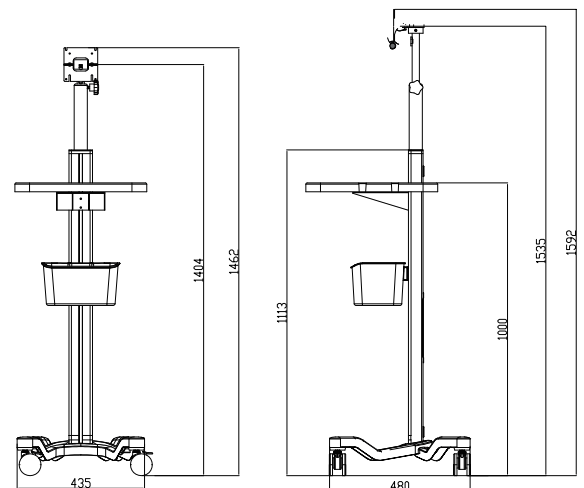


### Height-Adjustable Mount

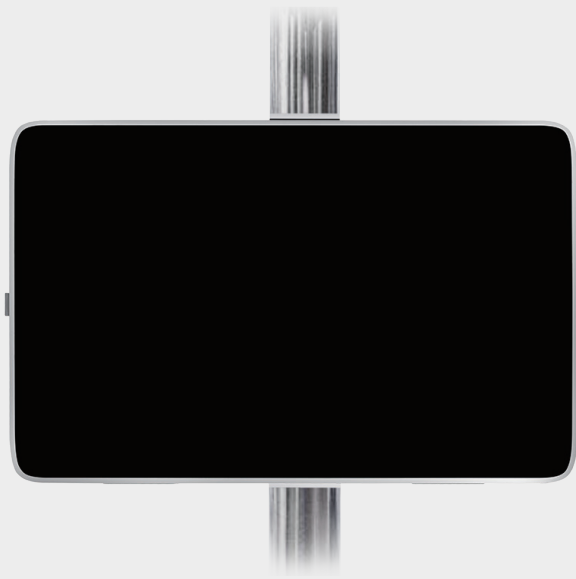
Stainless steel mobile stand with quick-release locking mechanism for vertical positioning of medical devices.

## Physical Structure Dimensions

RP-GT03



Specifications, design and accessories are subject to change without any notice or obligation on the part of the manufacturer.



## Pole mount

### Pole mount clamp for processor/display

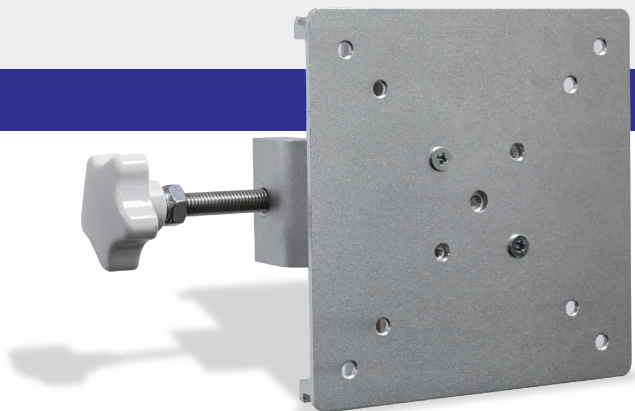
Reinforced mounting solution for stable  
equipment positioning



## Pole Mounting Solution

### Product Description

This pole mount allows the image processor to be mounted on the roll stands, ambulance cots or hospital stretchers.



### Product detail

Size: 126\*126\*57mm  
Maximum load capacity: 3 kg  
Direct mounting to 75×75mm or 100×100mm  
patterns, includes adjustable clamp for  
posts/rails (Ø10-40 mm).







## Pole Mounting Solution

# Power Supply Mount

**Pole mount clamp  
for power adapter/cable with cable cleat**

Compact solution for easy pole-mounted device installation



## Product detail

Size: 215\*114\*86mm

Maximum load capacity: 3 kg

Adjustable clamp for posts/rails (Ø10-40 mm)

**Secures the placement of the power adapter  
and its cables, allows them to be attached  
to the pole and keep it off the ground**



Specifications, design and accessories are subject to change without any notice or obligation on the part of the manufacturer.